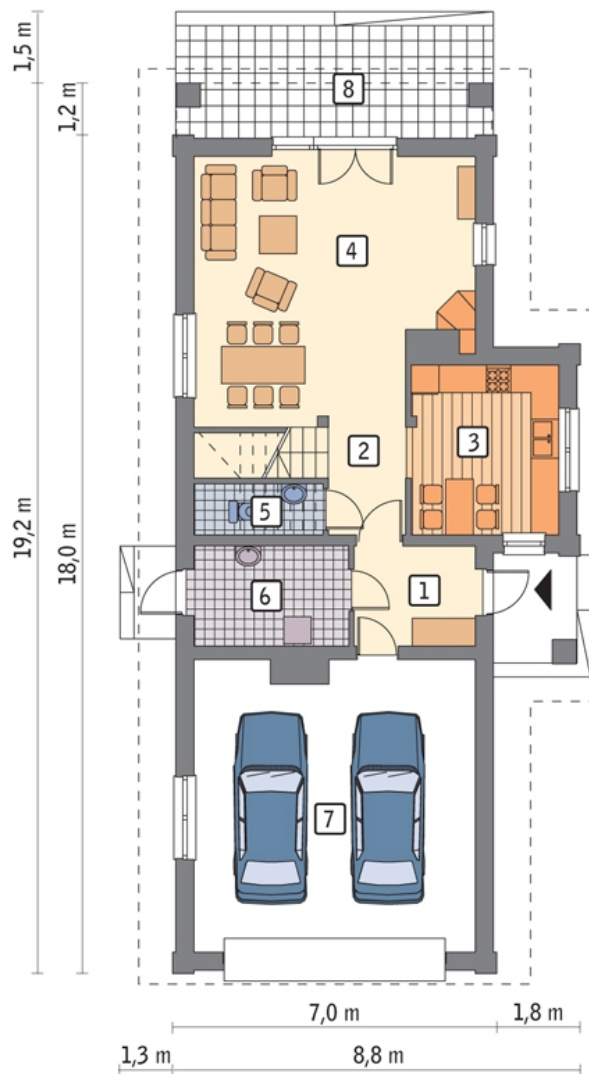
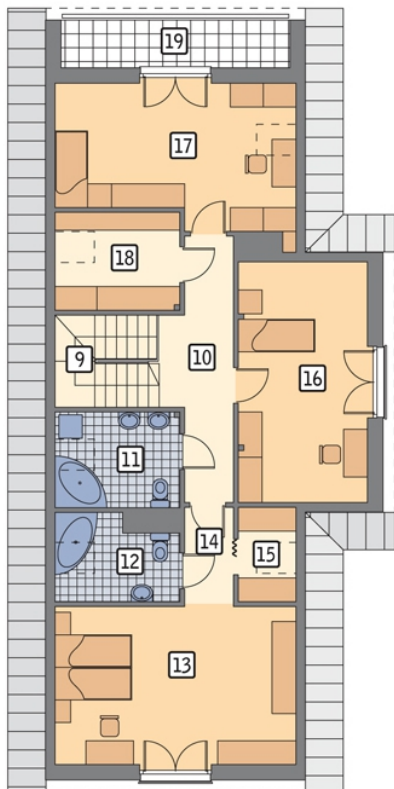


Rzuty

Parter 99.10 m²

| | |
|---------------|----------------------|
| przedsiónek | 5.50 m ² |
| hol | 4.10 m ² |
| kuchnia | 11.40 m ² |
| pokój dzienny | 31.80 m ² |
| wc | 2.00 m ² |
| kotłownia | 7.00 m ² |
| garaż | 37.30 m ² |
| taras | 0.00 m ² |

Poddasze 78.80 m²



| | |
|-----------|----------------------|
| hol | 9.50 m ² |
| łazienka | 5.20 m ² |
| łazienka | 4.10 m ² |
| sypialnia | 16.50 m ² |
| korytarz | 3.00 m ² |
| garderoba | 1.10 m ² |
| sypialnia | 14.10 m ² |
| sypialnia | 14.00 m ² |
| garderoba | 5.30 m ² |
| loggia | 0.00 m ² |
| schody | 6.00 m ² |