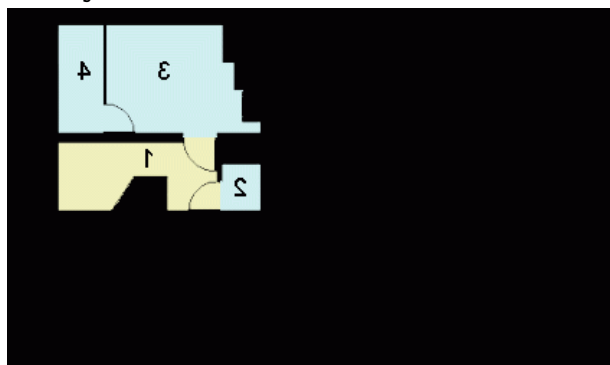


Rzuty

Piwnica 23.30 m²

| | |
|-------------|----------------------|
| Korytarz | 8.10 m ² |
| Schowek | 1.30 m ² |
| Kotłownia | 10.50 m ² |
| Skład opału | 3.40 m ² |


Parter 106.30 m²

| | |
|------------------|----------------------|
| Wiatrołap | 3.90 m ² |
| Hall+Schody | 14.20 m ² |
| Garderoba | 2.30 m ² |
| Pokój | 13.90 m ² |
| Spizarnia | 1.90 m ² |
| Kuchnia/Jadalnia | 18.90 m ² |
| Salon | 37.60 m ² |
| Łazienka | 4.00 m ² |
| Pom.gospodarcze | 9.60 m ² |

Rzuty

Poddasze 110.20 m²

| | |
|-----------|----------------------|
| Hall | 11.90 m ² |
| Łazienka | 2.70 m ² |
| Sypialnia | 15.60 m ² |
| Sypialnia | 14.00 m ² |
| Sypialnia | 15.40 m ² |
| Sypialnia | 15.70 m ² |
| Garderoba | 2.00 m ² |
| Garderoba | 2.20 m ² |
| Garderoba | 1.90 m ² |
| Łazienka | 6.90 m ² |